

Newcastle City Council - Public Consultation Report

Project: Hadrian Road Greenspace

Date: 8th November 2023

Executive Summary

An on-site public consultation event was undertaken on the 12th September 2023 by the North East Community Forest together with Northumberland Wildlife Trust. Feedback was taken on site, together with feedback from emails and telephone conversations. Additionally, two Let's Talk Newcastle consultations were run between the 22nd August – 26th September and the 6th October - 27th October respectively. The second of these online consultations included a draft site proposals plan which has subsequently been updated and included with this report. The project proposals include the planting of 15 no. trees of mixed species around the perimeter of the green space, together with resurfacing of the existing path and the planting of bulbs and wildflowers.

Consultation Feedback

Site Consultation Feedback

- There were 23 designs created by residents
- 15 of these featured tree planting to the edges, in line with the final design proposal.
- Wildflowers and bulbs featured in 11 designs.

Telephone & Email Feedback

- There were 7 email responses and one phone call.
- One email from a local resident was received by NCC via Cllr Shatwell advising that a tree shown in the NCC tree records has been removed.
- Four emails requested slides / basketball court / outdoor gym; things the Trees For Climate funding are unable to provide.
- One email requested trees but no benches to avoid people congregating.
- One email was in favour but unsure about the tree choices. Further information was provided.
- The telephone call was to encourage tree planting but ensure space is left for football games.

Let's Talk Newcastle Feedback

- The initial online consultation yielded a total of 0 public responses.
- The second online consultation yielded a total of 3 public responses from residents from the Wingrove ward.
- One response expressed dissatisfaction that no benches could be included in the proposals.
- One response expressed support for the proposals, particularly for the community and ecology, together with suggestions for seating to be integrated into the space in the future.

- One response expressed support for the proposals, together with a suggestion for dog waste bins to be added in the future.

How have we used this feedback?

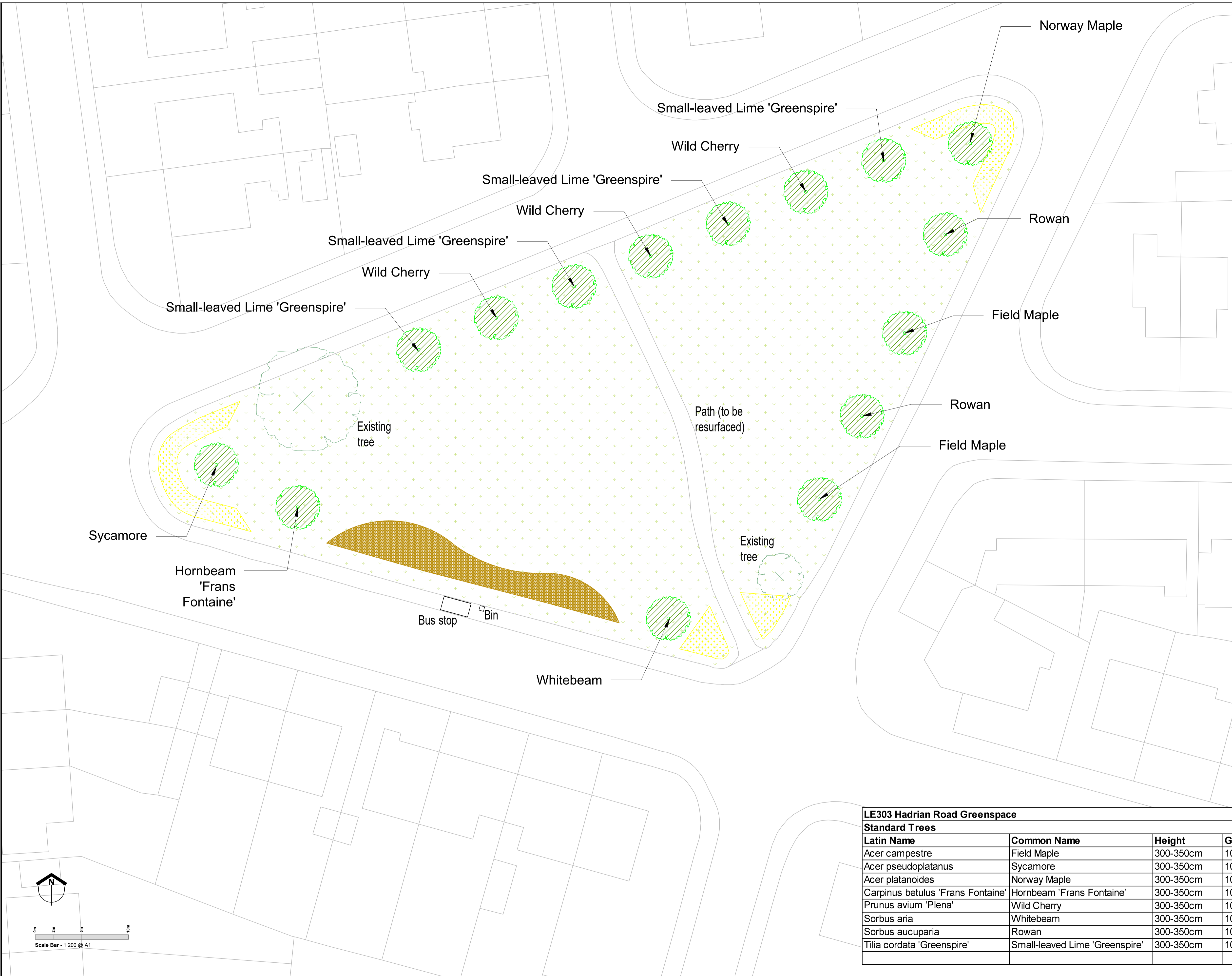
The feedback from the initial on-site consultation was fed into the design of the initial project proposals plan which was included in the second Let's Talk Newcastle consultation. The findings of the consultation helped to locate the best location for trees, wildflowers and bulbs on the site. Following the second Let's Talk Newcastle consultation, the feedback received was used to update the project proposals plan which is now included with this report. The final scheme aims to provide a range of tree species, to provide resilience against climate change as well as varied amenity interest, together with areas of wildflower seeding and bulb planting for seasonal interest. The path is proposed to be resurfaced, in order to improve the accessibility across the site.

Moving forward, NCC is aware of the local resident's suggestions for seating and dog waste bins in the public space, and this is noted for future green space improvements should funds for these elements become available.

Appendix

Drawings

- LE303/002 rev 2 Planting Plan



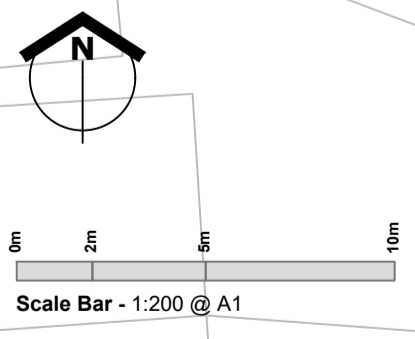
LEGEND

- Existing tree to be retained
- Proposed tree
Refer to planting schedule for list of species and sizes
- Existing short grass to be retained
- Bulb Planting Mix
- Narcissus 'February Gold' 50%
- Narcissus 'Mount Hood' 50%
- Wildflower Areas
British Wildflower Seeds 'Northumberland Meadow Seed Mix' - sown at 4g per square metre

- 1.1 PLANTING SPECIFICATION**
- 1.1.1 ALL PLANTING TO BE CARRIED OUT DURING APPROPRIATE CONDITIONS DURING THE NEXT PLANTING SEASON AND IN ACCORDANCE WITH BS8545.
- 1.2 HEAVY STANDARD TREES**
- 1.2.1 ALL TREES DOUBLE STAKED, INCLUDE STRIMMER GUARDS TO TREES IN GRASS.
- 1.2.2 DOUBLE STAKE, 1500 X 65MM DIAM. UNPEELED LARCH STAKE, ANGLED OR VERTICAL. POINTED END DRIVEN 800MM BELOW FINISHED GROUND LEVEL. TREE SECURED WITH BIODEGRADABLE TIES, 'NATURETIE' BY GREENBLUE URBAN OR EQUAL.
- 1.2.3 TREE PIT NO DEEPER THAN EXISTING ROOTBALL/ CONTAINER DEPTH.
- 1.2.4 PIT DIAMETER 75MM GREATER THAN ROOT BALL OR ROOT SYSTEM - SCARIFY SIDES OF PIT PRIOR TO PLANTING.
- 1.2.5 FERTILIZER - ENMAG FERTILIZER (BY SCOTTISH AGRICULTURAL INDUSTRIES LTD (OR EQUAL) TO TREE PITS PRIOR TO PLANTING AT 140 GRAMS PER PIT.
- 1.2.6 HYDROGEL - BROADLEAF P4 BY AGRICULTURAL POLYMERS INTERNATIONAL LTD (OR EQUAL) TO TREE PITS PRIOR TO PLANTING AT RATE OF 100 GRAMS PER PIT.
- 1.2.7 BACKFILL WITH SAME SOIL REPLICATING EXISTING SOIL PROFILE.
- 2.0 MAINTENANCE SPECIFICATION**
- 2.1 ALLOW FOR A 3 YEAR ESTABLISHMENT PERIOD.
- 2.2 MAINTAIN A 1M DIAMETER CLEAR AREA AROUND EACH TREE WITH HERBICIDE OR BARK MULCH AS APPROPRIATE.
- 2.3 WATER DURING DRY PERIODS FOR THE FIRST 2 GROWING SEASONS AT THE FOLLOWING RATES (ALLOW 10NO VISITS/ YEAR):
- HEAVY STANDARD TREES, 20L TWICE A WEEK.
 - TRANSPLANT TREES AND SHRUBS, 5L TWICE A WEEK.
- 2.4 TOP-UP BARK MULCH TO MAINTAIN 50MM DEPTH ANNUALLY.
- 2.5 CHECK TIES, GUARDS AND STAKES ANNUALLY.
- 2.6 REPLACE ANY TREES/ SHRUBS WHICH FAIL TO ESTABLISH IN THE NEXT GROWING SEASON.
- 2.7 REMOVE GUARDS, TIES AND STAKES DURING THE 3 YEAR ESTABLISHMENT PERIOD, CHECK ANNUALLY.
- 2.8 MANAGEMENT ONCE ESTABLISHED: TRIM VEGETATION BACK FROM PATHS AND ROAD AS REQUIRED.

LE303 Hadrian Road Greenspace

Standard Trees							
Latin Name	Common Name	Height	Girth	Form	Clr Stm	Root	Qty
Acer campestre	Field Maple	300-350cm	10-12cm	Standard	175cm - 200cm	RB	2
Acer pseudoplatanus	Sycamore	300-350cm	10-12cm	Standard	175cm - 200cm	RB	1
Acer platanoides	Norway Maple	300-350cm	10-12cm	Standard	175cm - 200cm	RB	1
Carpinus betulus 'Frans Fontaine'	Hornbeam 'Frans Fontaine'	300-350cm	10-12cm	Standard	175cm - 200cm	RB	1
Prunus avium 'Plena'	Wild Cherry	300-350cm	10-12cm	Standard	175cm - 200cm	RB	3
Sorbus aria	Whitebeam	300-350cm	10-12cm	Standard	175cm - 200cm	RB	1
Sorbus aucuparia	Rowan	300-350cm	10-12cm	Standard	175cm - 200cm	RB	2
Tilia cordata 'Greenspire'	Small-leaved Lime 'Greenspire'	300-350cm	10-12cm	Standard	175cm - 200cm	RB	4
Total							15



Rev.	By	Date	Description
02	GC	31/10/23	Tree numbers updated.
01	GC	12/10/23	Tree names updated to common names. Bulb species added.

Project
LE303
Hadrian Greenspace

Drawing title
Planting Plan

Drawn by
GC
Date
28/09/23
Path & Filename
G1
Layout
A1

Scales 1:200	
Job Number LE303	Revision 02
Drawing Number 002	